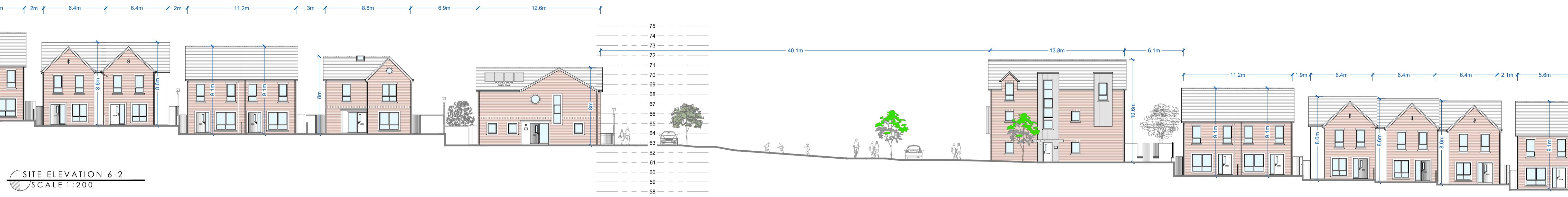


All dimensions to be checked on site. Figured dimensions take preference over scaled dimensions. Any errors or discrepancies to be reported to the Architects. This drawing may not be edited or modified by the recipient.
 Copyright and ownership of this drawing is vested in STRUTEC, whose prior written consent is required for its use, reproduction or for publication to any third party. All rights reserved by the law of copyright and by international copyright conventions are reserved to STRUTEC, and may be protected by court proceedings for damages and/or injunctions and costs.



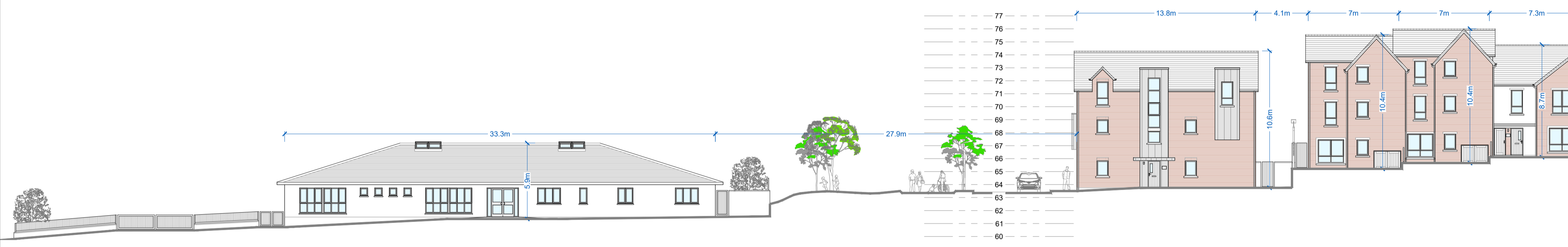
SITE ELEVATION 6-1
SCALE 1:200



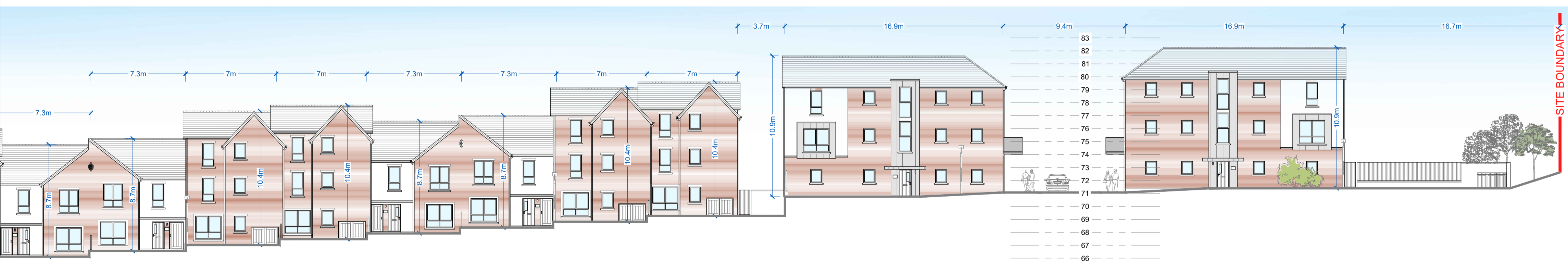
SITE ELEVATION 6-2
SCALE 1:200



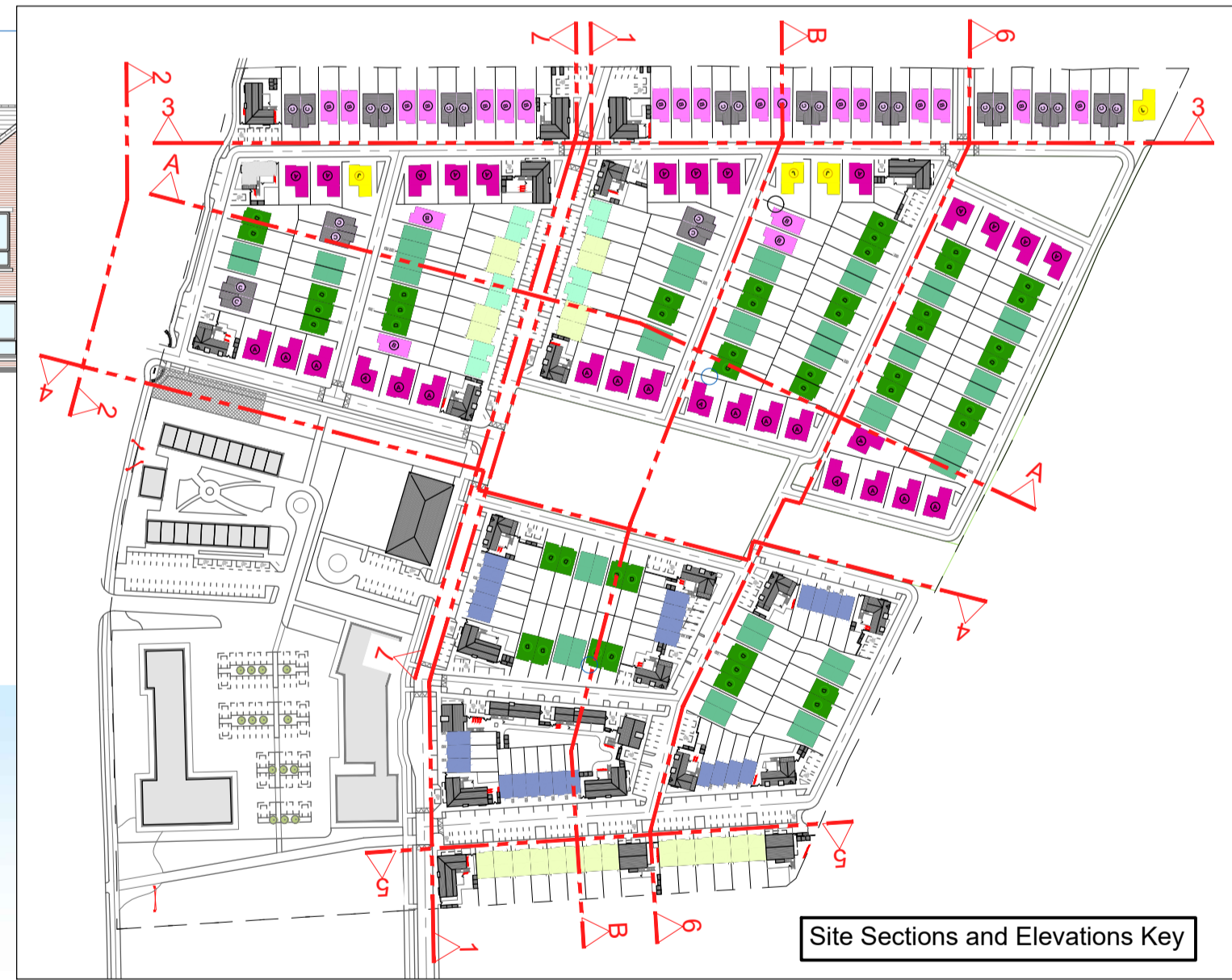
SITE ELEVATION 6-3
SCALE 1:200



SITE ELEVATION 7-1
SCALE 1:200



SITE ELEVATION 7-2
SCALE 1:200



Site Sections and Elevations Key

- FINISHES:**
- ROOF:
 - FIBRE CEMENT SLATES OR SIMILAR IN SELECTED COLOURS.
 - UPVC/ALUMINIUM FASCIA, SOFFITS AND RAINWATER GOODS OR SIMILAR IN SELECTED COLOURS.
 - WALLS:
 - EXTERNAL WALLS TO BE GENERALLY BRICK AND RENDERED IN SELECTED COLOURS. RED/BROWN BRICK GENERALLY WITH CHARCOAL BRICK TO EXTERNAL STAIRS.
 - ZINC CLADDING TO SELECTED AREAS WHERE INDICATED.
 - DOORS AND WINDOWS:
 - ALL FRONT ENTRANCE DOORS TO BE HARDWOOD OR SIMILAR, IN SELECTED COLOURS.
 - OTHER DOORS AND WINDOWS TO BE 1/2 UPVC OR SIMILAR IN SELECTED COLOURS.
 - STONE-EFFECT WINDOW/DOOR SURROUNDS/HEADS IN SELECTED SANDSTONE COLOURS WHERE INDICATED. CALLS TO MATCH.
 - RED/BROWN BRICK WINDOW/DOOR SURROUNDS/HEADS WHERE INDICATED.
 - BALUSTRADES:
 - TO STAIRS - METAL HANDRAIL TO PARTS K AND M ON METAL BALUSTERS AND WALLS FINISHED AS SHOWN IN SELECTED COLOUR.

REV	DATE	REV BY	DESCRIPTION
STATUS PLANNING			
PROJECT CREAGH STRATEGIC HOUSING RESIDENTIAL DEVELOPMENT			
PROJECT ADDRESS BALLOWEN/RAMSFORTPARK, GOREY, CO. WEXFORD			
DWG TITLE SITE ELEVATIONS			
DWG NO	PL2-024	REV	-
JOB NO	1725	SCALE	A1
DATE	29.11.2018	DRN	Liam Minoque
STRUTEC Architectural & Engineering Consultants Garryhill, Bagenalstown, Co. Carlow, R2 KP44 Tel: +353 (0)55 97 27623 W: www.strutec.ie E: info@strutec.ie			